

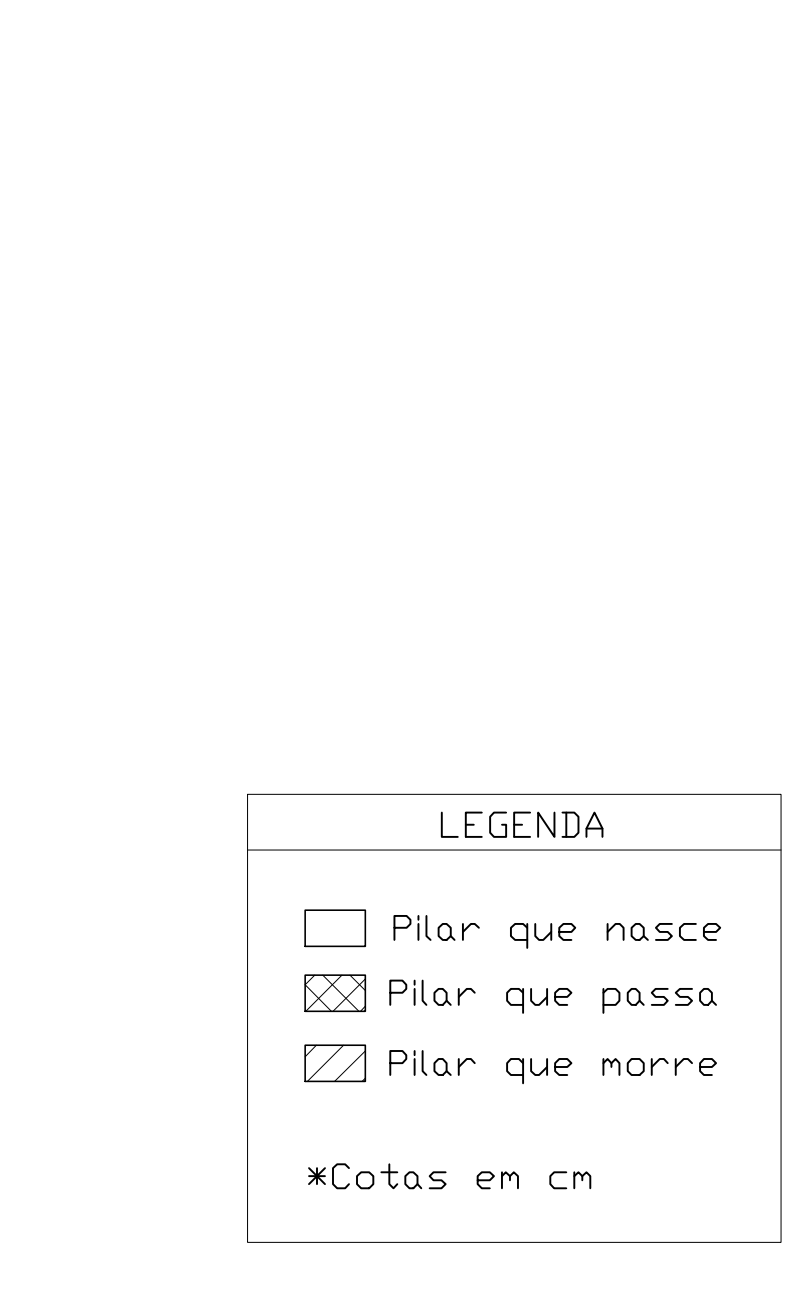
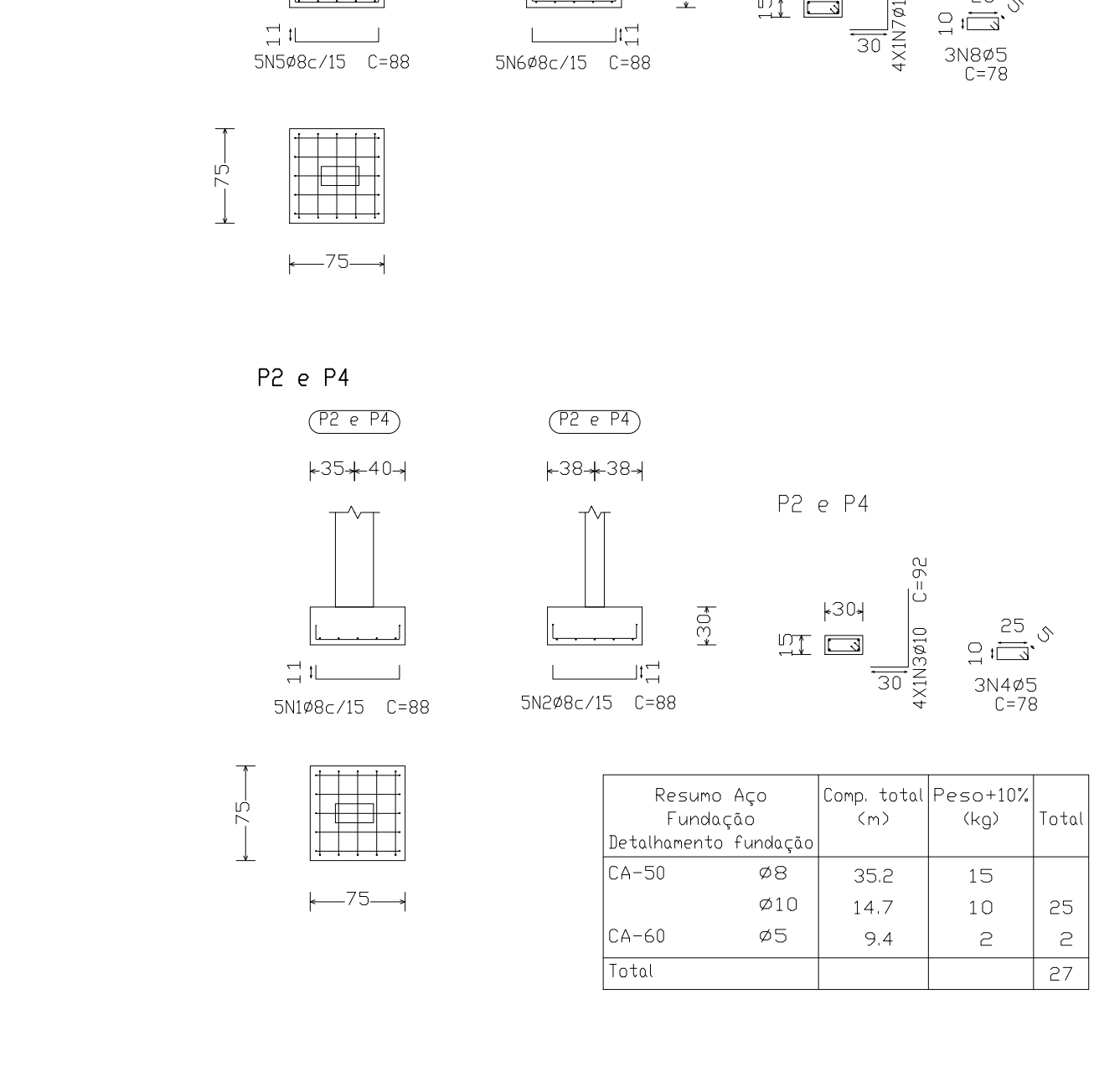
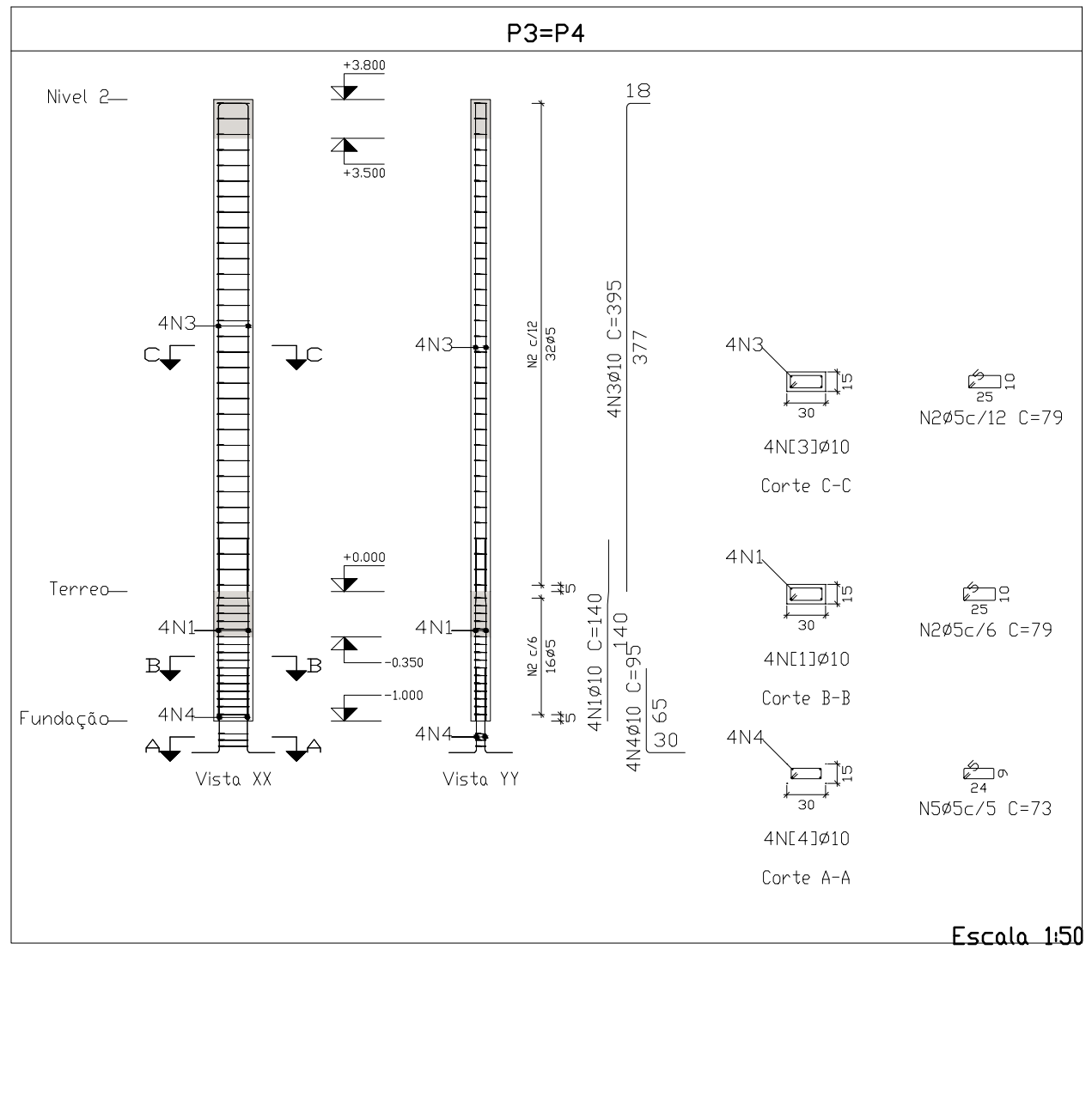
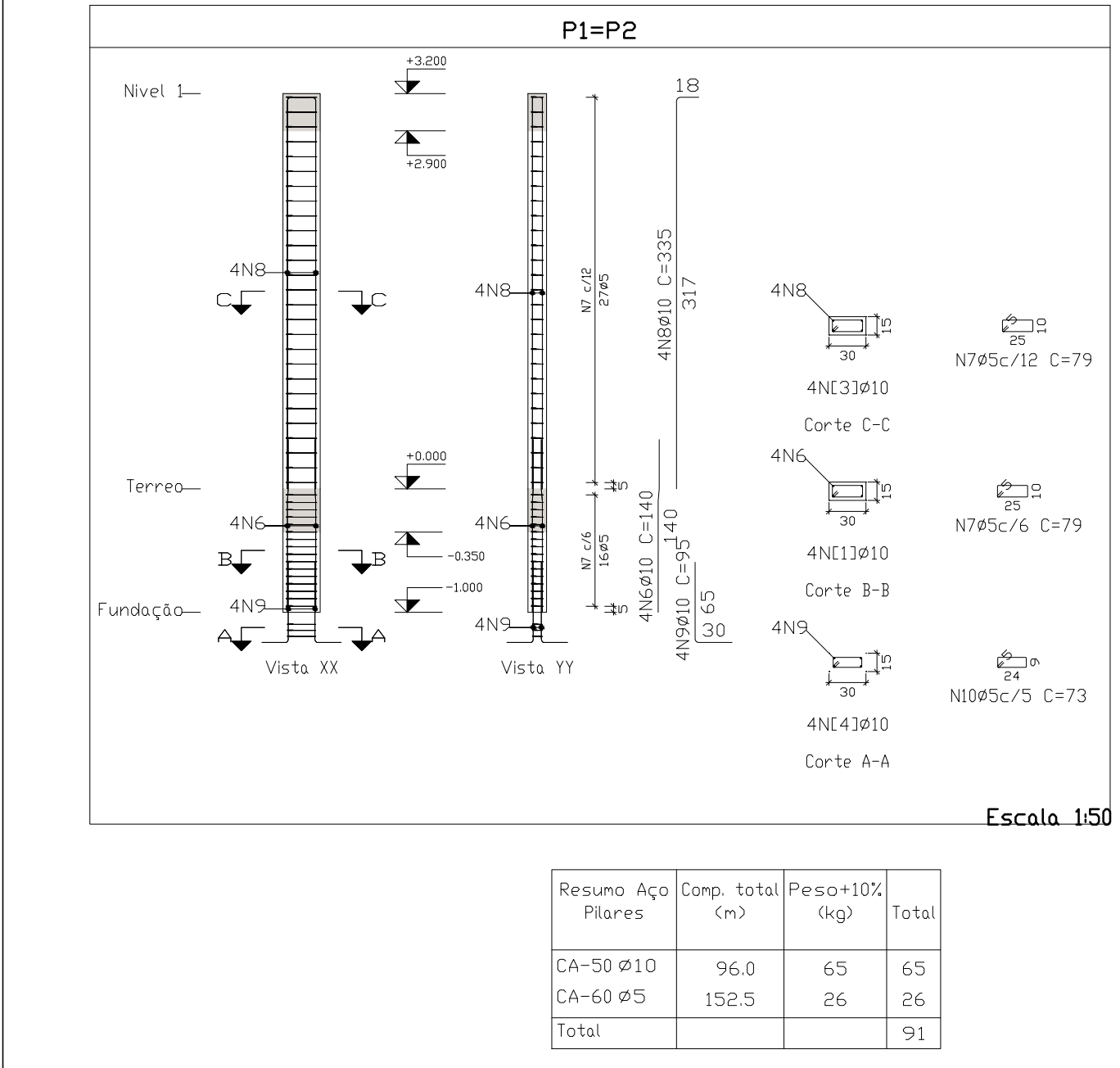
3D Sem escala

Elemento	Pos.	Diam.	Q.	Dob (cm)	Reta (cm)	Dob (cm)	Comp (cm)	Total (cm)	CA-50 (kg)	CA-60 (kg)
Nível 1 (P1) - Nível 2 (P3)	1	Ø8	2	15	426	15	456	912	3.6	
	2	Ø8	2	15	426	15	456	912	3.6	
	3	Ø5	30		76		76	2280		3.6
Total+10%									7.9	4.0
Nível 1 (P2) - Nível 2 (P4)	4	Ø8	2	15	420	15	450	900	3.6	
	5	Ø8	2	15	420	15	450	900	3.6	
	6	Ø5	29		76		76	2204		3.5
Total+10%									7.9	3.9
Ø5:									0.0	7.9
Ø8:									15.8	0.0
Total:									15.8	7.9

Elemento	Pos.	Diam.	Q.	Esquema (cm)	Comp (cm)	Total (cm)	CA-50 (kg)	CA-60 (kg)
V 1	1	Ø10	4	180	180	720	4.4	
	2	Ø8	2	645	666	1332	5.3	
	3	Ø10	2	645	695	1390	8.6	
	4	Ø8	1	625	625	25		
	5	Ø5	34	86	2924	4.6		
Total+10%							22.9	5.1
V 2	1	Ø10	4	180	180	720	4.4	
	2	Ø8	2	645	666	1332	5.3	
	3	Ø10	2	645	695	1390	8.6	
	4	Ø8	1	645	645	25		
	5	Ø5	34	86	2924	4.6		
Total+10%							22.9	5.1
V 3=V 4	1	Ø8	2	435	485	970	3.8	
	2	Ø8	2	435	435	870	3.4	
	3	Ø5	28	76	2128	3.3		
Total+10%							7.9	3.6
(x2)							15.8	7.2
V102	1	Ø8	2	645	695	1390	5.5	
	2	Ø8	2	645	645	1290	5.1	
	3	Ø5	40	76	3040	4.8		
Total+10%							11.7	5.3
V101	1	Ø8	2	645	695	1390	5.5	
	2	Ø8	2	645	645	1290	5.1	
	3	Ø5	40	76	3040	4.8		
Total+10%							11.7	5.3
(x2)							23.4	10.6
Ø5:							0.0	28.0
Ø8:							56.4	0.0
Ø10:							28.6	0.0
Total:							85.0	28.0

Elemento	Pos.	Diam.	Q.	Esquema (cm)	Comp (cm)	Total (cm)	CA-50 (kg)	CA-60 (kg)
P3=P4	1	Ø10	4	140	140	560	3.5	
	2	Ø5	48	79	3792	6.0		
	3	Ø10	4	395	1580	9.7		
	4	Ø10	4	95	380	2.3		
	5	Ø5	3	73	219	0.3		
Total+10%							17.1	6.9
(x2)							34.2	13.8
P1=P2	6	Ø10	4	140	140	560	3.5	
	7	Ø5	43	79	3397	5.3		
	8	Ø10	4	335	1340	8.3		
	9	Ø10	4	95	380	2.3		
	10	Ø5	3	73	219	0.3		
Total+10%							15.5	6.2
(x2)							31.0	12.4
Ø5:							0.0	26.2
Ø8:							0.0	0.0
Ø10:							65.2	0.0
Total:							65.2	26.2

Elemento	Pos.	Diam.	Q.	Dob (cm)	Reta (cm)	Dob (cm)	Comp (cm)	Total (cm)	CA-50 (kg)	CA-60 (kg)
P2=P4	1	Ø8	5	11	66	11	88	440	1.7	
	2	Ø8	5	11	66	11	88	440	1.7	
	3	Ø10	4	30	62		92	368	2.3	
	4	Ø5	3	78			78	234		0.4
Total+10%							6.3	0.4		
(x2)							12.6	0.8		
P1=P3	5	Ø8	5	11	66	11	88	440	1.7	
	6	Ø8	5	11	66	11	88	440	1.7	
	7	Ø10	4	30	62		92	368	2.3	
	8	Ø5	3	78			78	234		0.4
Total+10%							6.3	0.4		
(x2)							12.6	0.8		
Ø5:							0.0	1.6		
Ø8:							14.8	0.0		
Ø10:							10.4	0.0		
Total:							25.2	1.6		



ESTRUTURAL

RESPONSÁVEIS TÉCNICOS: **GUILHERME PETRONE SOARES DE OLIVEIRA** (CREA 146.780/0)

PROPRIETÁRIO: **UNIVERSIDADE FEDERAL DOS VALES DO JEQUITINHONHA E MUCURI** (CNPJ 16.888.315/0001-57)

PROPRIETÁRIO: **UNIVERSIDADE FEDERAL DOS VALES DO JEQUITINHONHA E MUCURI**

LOCAL: **CAMPUS MUCURI - RUA CRUZEIRO, Nº 01 - JARDIM SÃO PAULO TEÓFILO OTONI**

OBRA: **EDIFICAÇÃO INSTITUCIONAL**

ESPECIFICAÇÃO: **- Planta de forma e detalhamento das vigas, pilares e sapatas;**

DATA: **06/08/2021** ESCALA: **INDICADA** FCK: **25 MPA**

ARQUIVO: **EST_PROJETO.DWG**

FOLHA: **EST**

Nº FOLHA: **01/01**